

Imaging colorimetric markers using GeneSnap software

Introduction

Colorimetric markers are commonly used to assess the relative molecular weight (MW) of a protein on a gel; protein MW markers are normally run in the outer lanes of the gel for comparison.

Colorimetric markers are also used to confirm that a membrane transfer is complete and that the western blotting conditions were successful.

There are a range of fluorescent (Pierce blue, Thermo Scientific, UK, Pierce three-color, Thermo Scientific, UK, ColorBurst Sigma, UK and many more) molecular weight markers currently available.

Imaging Colorimetric markers using GeneSnap

In the past GeneSnap users were required to create a 'New composite image'. This involved taking two separate images one of the colorimetric markers and one of the chemiluminescence blot. The latest GeneSnap software with a intelli-chemi mode will automatically image markers when the 'image has markers' box is ticked (**Figure 1**)



Figure 1- 'Image has markers' box

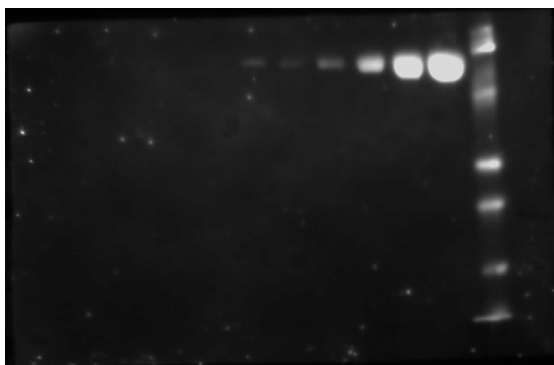


Figure 2- Image of a Chemiluminescent blot and colorimetric markers.

The method of creating a 'composite image' is still available with GeneSnap software and can be used if the user prefers. This method involves capturing two images one of the colorimetric markers using epi white light and the other of the chemiluminescent blot using 'No light' and 'No filter' settings.

From the 'File' menu choose 'create new composite image' and select images from the drop down menu. In

the first channel choose the image of the markers, choose to invert the image. For the second box select chemiluminescent image and the third box should be kept blank. Then select 'create monochrome image' from the bottom of the screen. To scale images use the histogram to scale images.

Syngene reserves the right to amend or change specifications without prior notice. This Application Note supersedes all earlier versions.

All trademarks acknowledged.

May 2010

UK tel: +44 (0)1223 727123
Email: sales@syngene.com

USA tel: 800 686 4407/301 662 2863
Email: ussales@syngene.com