

InGenius³ Installation - Quick Guide

■ System components

1. Darkroom (overhead white lighting- factory fitted)
2. CCD camera with manual lens pre-fitted to the camera
3. UV transilluminator and Visible light converter (NovaGlo)
4. UV emission filter and filter drawer
5. Syngene branded flash drive containing software media keys, the *GeneTools* software installer and the *GeneSys* software installer
6. Mains power lead and USB cable

CAUTION: Do not connect power supply to any of the components until you are satisfied that everything is connected correctly. For assistance please contact your supplier or Syngene directly

■ Installation

Transilluminator set-up

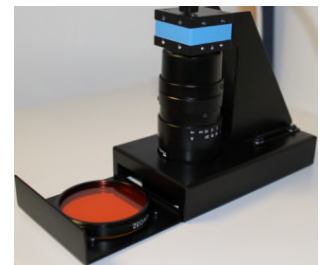
1. Remove the cable-tie from the free flying mains lead found inside the darkroom.
2. Place the transilluminator inside the darkroom and connect it to the free flying lead.

Camera set-up

1. Plug the provided USB cable into the camera, but **do not** attach the other end of the cable to the PC.

Installing the filter

1. Place the UV 032 filter with the thread pointing upwards in the filter drawer (found below the camera and on the top of the InGenius 3 system).
2. This filter can be interchanged with other filters for different dyes.



Darkroom power

1. Ensure the InGenius 3 darkroom is switched off (position: 0).
2. Connect the mains power lead to a free power socket and then into the InGenius 3.
3. Switch the InGenius 3 darkroom on (position: 1).

■ PC set-up (Syngene supplied PC)

If you purchased a pre-configured PC from Syngene then please perform the following 3 steps:

1. Connect the monitor, keyboard and mouse to the appropriate ports of the PC.
2. Connect the InGenius 3, camera USB cable to a USB port on the PC.
3. Connect the electrical power leads to the PC and monitor and then power-on the PC.

Your InGenius 3 system is now setup and ready to use. You can launch the *GeneSys* and *GeneTools* software via the Desktop shortcuts.

Note: You should skip the remaining instructions in this guide as they do not apply to your set-up.

■ PC set-up (Your own PC)

If you did **not** purchase a pre-configured PC from Syngene then please perform the following steps to setup your PC:

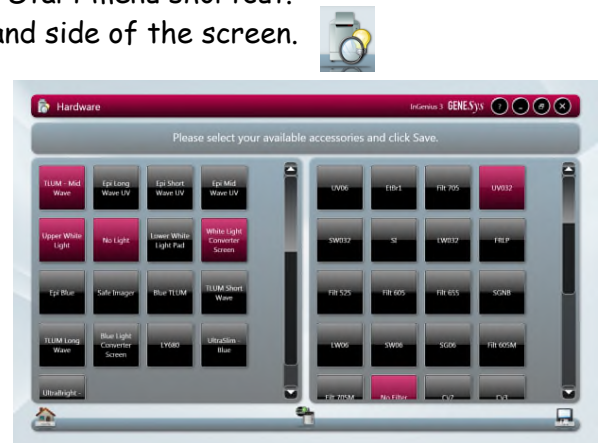
Installing GeneSys software

1. Plug the Syngene branded flash drive into your PC.
2. Navigate into the "GeneSys" folder on the flash drive and run the "setup" file. Follow the on-screen instructions and only proceed onto the next step when you have successfully finished the GeneSys installation.
3. Connect the InGenius 3, camera USB cable to a USB port on the PC. Windows should automatically load the camera drivers.

Configure GeneSys for your hardware

When using GeneSys software for the first time or when you have purchased additional accessories (e.g. converter screens) you must tell GeneSys which lights, filters and accessories you have. The instructions to do this are as follows:

1. Start the GeneSys software via the Desktop or Start menu shortcut.
2. Press the 'Hardware' icon in the bottom right hand side of the screen.
3. The left side of the screen displays lighting options. Select the "Upper White Light" option (this is a standard feature of all InGenius 3 systems). Also select any other lighting options that you have. Most InGenius 3 systems are supplied with the "TLUM - Mid Wave" and "White Light Converter Screen" options.
4. The right side of the screen displays filter options. Select the "UV032" option (this is supplied as standard with all InGenius 3 systems). Also select any other non-standard filters that you have.

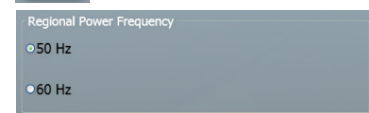
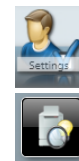


Selected items are shown in red.

5. When finished, press the 'Save' button. You will be returned to the home screen.

Configure GeneSys for your regional power frequency

1. From the home screen, press the 'Settings' button.
2. On the left side of the screen there are a set of vertically stacked buttons. Press the 'System' button.
3. Under the 'Regional Power Frequency' heading, select the appropriate mains power frequency for your area.
4. Press the 'Save' button.



Installing GeneTools software

1. Plug the Syngene branded flash drive into the PC you wish to install GeneTools on. Navigate into the "GeneTools" folder on the flash drive and run the "InstallGeneTools" program.
2. Follow the on-screen instructions to install and license the GeneTools software. You will probably have been provided with media keys to license the software. These media keys can be found in a file named "Media Keys.txt" on the flash drive.

CONTACT SYNGENE:
EUROPE:
Tel: +44 (0)1223 727123
Email: support@syngene.com

USA:
Tel: 800 686 4407/301 662 2863
Email: support@syngene.com

www.syngene.com
IG3INST0416