

G:BOX Range Fluorescence Automated Image Capture - Quick Guide

1. Start GeneSys software

Each user can enter a name or title for their own individual user preferences

2. Home screen

Select Gels or Blots from the home screen

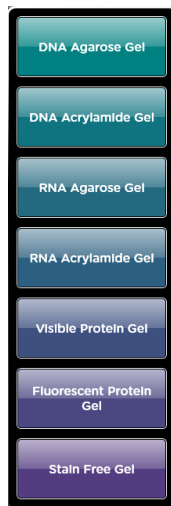


3. Sample selection

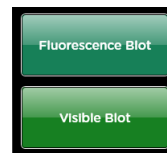
Choose your sample format from the drop down list.

For Gels choose from DNA Agarose Gel, DNA Acrylamide Gel, RNA Agarose Gel, RNA Acrylamide Gel, Visible Protein Gel, Fluorescent Protein Gel and Stain Free Gel.

For Blot options choose from Fluorescence Blot and Visible Blot.



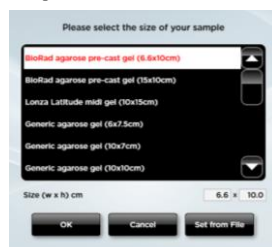
Gels



Blots

4. Sample size

Select your sample size from the drop down list. If the manufacturer of your gel/membrane is not listed please select custom to add in your own size.

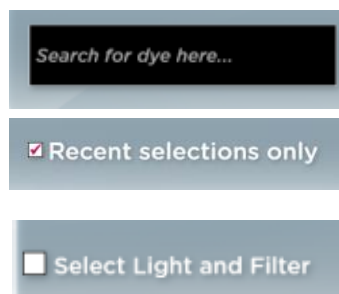
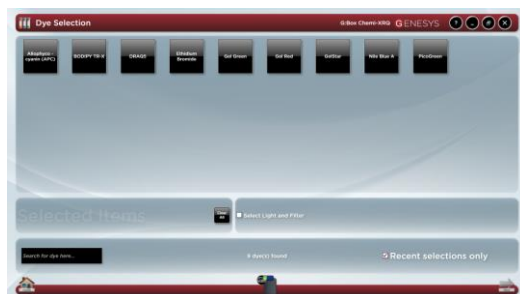


G:BOX Range Fluorescence Automated Image Capture - Quick Guide

5. Dye selection

Select the dye you are using from the list on screen. For multiplexing simply select Multiple Dyes from the list (select up to 5).


Use the search box to quickly find dyes within the list or if it is a dye you have used before check the 'Recent selections only' to display the recently used dyes. To view more imaging conditions check 'Light and Filter' box. Click the green bouncing arrow to move to the next screen.





6. Sample positioning

Use the Lens Control slider bars to adjust the focus, iris and zoom.



Focus  - move the slider bar towards the +/- to improve focus.

Iris  - to alter camera aperture move the slider bar towards + to let more light reach the camera sensor and move towards - to close the aperture.

Zoom  - allows you to enlarge the image. Zoom in so that the sample fills the image window for maximum resolution

Click the capture button to capture your image.

7. Print and save

Click on the printer icon to send image to printer.

Click 'Save' icon to save the image as a .SGD file.

Click 'Save as' icon to choose to save the image as a TIF, JPEG or BMP file.

