

# G:BOX F<sup>3</sup> Fluorescence Automated Image Capture Quick Guide

## 1 Start GeneSys software

➔ Each user can enter a name or title for their own individual user preferences

## 2 Home screen

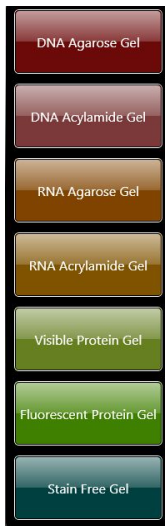
Select



➔ Select Gels from the home screen

## 3 Sample selection

Select

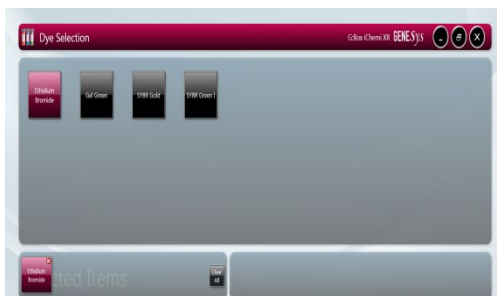


➔ Choose your sample format from the drop down list

➔ Choose from DNA Agarose Gel, DNA Acrylamide Gel, RNA Agarose Gel, RNA Acrylamide Gel, Visible Protein Gel, Fluorescent Protein Gel and Stain Free Gel

## 4 Dye selection

Select



➔ Select the dye that you are using from the list on screen

➔ For multiplexing simply select multiple dyes off the list (select up to 5)

➔ Use the search box to quickly find dyes within the list or if it is a dye that you have used before check the 'Recent selections only' to display the recently used dyes

Select



Check



Check








➔ To view more imaging conditions check 'Light and Filter' box

Click large green bouncing arrow to move to next screen

**5**

## Sample positioning



- ➔ Use the Lens Control arrows to adjust the focus, iris and zoom
- ➔ Focus  - press the up or down arrows to adjust the focus
- ➔ Iris  - to alter camera aperture press the  to let more light reach the camera sensor and press the  - to close the aperture
- ➔ Zoom  - allows you to enlarge the image. Zoom in so that the sample fills the image window for maximum resolution

Click large green bouncing arrow to move to next screen

**6**

## Print and save

Click



- ➔ Click on the printer icon to send image to printer

Click



- ➔ Click Save and choose to save image as a TIF, BMP or JPEG

CONTACT SYNGENE:  
 EUROPE:  
 Tel: +44 (0)1223 727123  
 Email: [support@syngene.com](mailto:support@syngene.com)

USA:  
 Tel: 800 686 4407/301 662 2863  
 Email: [support@syngene.com](mailto:support@syngene.com)

[www.syngene.com](http://www.syngene.com)  
 GBF3FAIC1013