

# G:BOX Range Fluorescence Automated Image Capture - Quick Guide

## 1 Start GeneSys software

➔ Each user can enter a name or title for their own individual user preferences

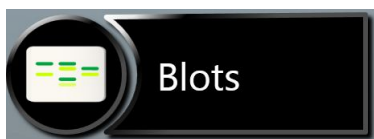
## 2 Home screen

➔ Select Gels or Blots from the home screen

Select



Select



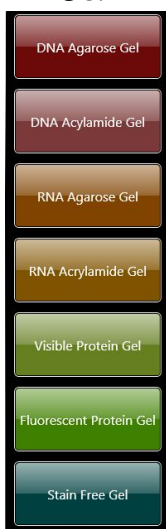
## 3 Sample selection

➔ Choose your sample format from the drop down list

➔ For Gel options choose from DNA Agarose Gel, DNA Acrylamide Gel, RNA Agarose Gel, RNA Acrylamide Gel, Visible Protein Gel, Fluorescent Protein Gel and Stain Free Gel

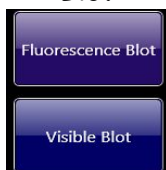
Select

### Gel



Select

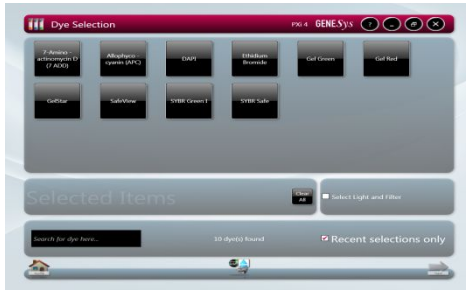
### Blot



➔ For Blot options choose from Fluorescence Blot and Visible Blot

## 4 Dye selection

Select



Select



Check



Check






- ➔ Select the dye that you are using from the list on screen
- ➔ For multiplexing simply select multiple dyes off the list (select up to 5)
- ➔ Use the search box to quickly find dyes within the list or if it is a dye that you have used before check the 'Recent selections only' to display the recently used dyes
- ➔ To view more imaging conditions check 'Light and Filter' box
- ➔ Click large green bouncing arrow to move to next screen

## 5 Sample positioning

Select



- ➔ Use the Lens Control slider bars to adjust the focus, iris and zoom
- ➔ Focus  - move the slider bar towards the +/- to improve focus
- ➔ Iris  - to alter camera aperture move the slider bar towards the + to let more light reach the camera sensor and move towards the - to close the aperture
- ➔ Zoom  - allows you to enlarge the image. Zoom in so that the sample fills the image window for maximum resolution
- ➔ Click large green bouncing arrow to move to next screen

## 6 Print and save

Click



- ➔ Click on the printer icon to send image to printer

Click



- ➔ Click Save and choose to save image as a TIF, BMP or JPEG

CONTACT SYNGENE:  
EUROPE:  
Tel: +44 (0)1223 727123  
Email: [support@syngene.com](mailto:support@syngene.com)

USA:  
Tel: 800 686 4407/301 662 2863  
Email: [support@syngene.com](mailto:support@syngene.com)

[www.syngene.com](http://www.syngene.com)  
GBRFAIC1013