

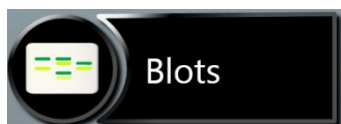
G:BOX Chemi Chemiluminescence Image Capture - Quick Guide

1 Start GeneSys software

➔ Each user can enter a name or title for their own individual user preferences

2 Home screen

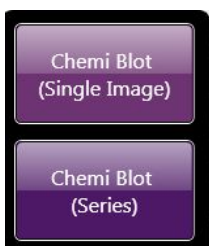
Select



➔ Select Blots from the home screen

3 Sample selection

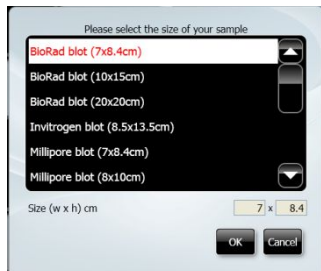
Select



➔ Choose if you wish to capture a single image or perform a series capture

4 Sample size

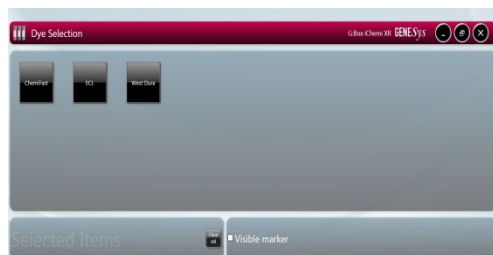
Select



➔ Select your sample size from the drop down list

➔ If the manufacturer of your blot membrane is not listed please select Custom to add in your own size

5 Dye selection



Select

Search for dye here...

Check

Recent selections only

Check

Visible marker

➔ Select the chemiluminescent substrate that you are using from the list on screen

➔ Use the search box to quickly find dyes within the list or if it is a dye that you have used before check the 'Recent selections only' to display the recently used dyes



➔ Check the 'Visible marker' box if you wish to image a marker

➔ Click large green bouncing arrow to move to next screen

6

Sample positioning



- ➔ Use the Lens Control slider bars to adjust the focus and zoom
- ➔ Focus  - move the slider bar towards the +/- to improve focus
- ➔ Zoom  - allows you to select areas of interest. Zoom in so that the sample fills the image window for maximum resolution

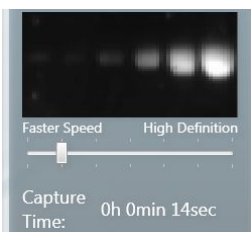
Click large green bouncing arrow to move to next screen

7

Capture



Slide



Press



Press



- ➔ Image preview - the software captures a quick image of the chemi blot
- ➔ Image preview - slide the 'Faster Speed/High Definition' bar until you are happy with the capture time. For a high quality image, position the slider bar towards the High Definition side
- ➔ To capture an image press the 'Capture' button
- ➔ To stop image capture at any time press the 'Stop' button

8

Print and save

Click



Click



- ➔ Click on the printer icon to send image to printer
- ➔ Click Save and choose to save image as a TIF, BMP or JPEG.

CONTACT SYNGENE:
 EUROPE:
 Tel: +44 (0)1223 727123
 Email: support@syngene.com

USA:
 Tel: 800 686 4407/301 662 2863
 Email: support@syngene.com

www.syngene.com

GBCCIC1114