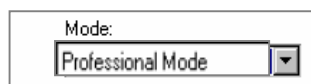


ProteomeScan Image capture-Quick Guide

1 Start Epson Scan software

Select



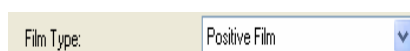
➔ Select the Professional Mode from the drop down menu

2 Select appropriate settings

Select



Select



➔ For film, Coomassie or silver stained gels

➔ Select Film with film Area Guide for the document type

➔ For Film type select positive film

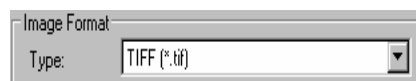
➔ Check that 16 bit Greyscale and 300 dpi are selected

3 Save settings icon

Click



Select



➔ Files can be saved to My Documents, My Pictures or Other

➔ From the drop down menu select TIFF as the recommended Image format type

4 Configuration settings

➔ To change configuration settings click on the tabs to change Preview, Colour, Film size and Other

➔ Click OK to save the changes

5 Position Sample

➔ Place Film Area Guide template on to scanner bed

➔ Place gel on to scanner bed

➔ **N.B.** Do not use the document mat

6 Preview

Click



➔ After the image has been preview scanned click on the 'Automatically locates the image' icon 

Click



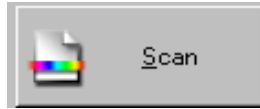
➔ A dotted box will now be drawn around the gel

➔ Click the zoom button to rescan the selected area

7

Scan

Select



Click the Scan button

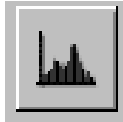


The scanned image will be saved automatically at the location chosen in step 3

8

Image Enhancements

Click

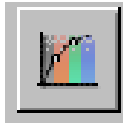


To enhance the image click on the following icons



The Histogram corrections icon allows the user to specify Highlight, shadow and gamma levels

Click



Use the Tone correction icon to adjust the tone curve for individual colours

Click



Use the Image adjustment icon to change the brightness and colour balance settings

CONTACT SYNGENE:

EUROPE:

Tel: +44 (0)1223 727123

Email: support@syngene.com

USA:

Tel: 800 686 4407/301 662 2863

Email: support@syngene.com

www.syngene.com

PSIC0210