

InGenius³ Installation - Quick Guide

■ System components

1. Darkroom (overhead white lighting- factory fitted)
2. CCD camera with manual lens pre-fitted to the camera
3. UV transilluminator and Visible light converter (NovaGlo)
4. UV emission filter and filter drawer
5. GeneSys and GeneTools analysis software
6. Full set of leads and cables

CAUTION: Do not connect power supply to any of the components until you are satisfied that everything is connected correctly. For assistance please contact your supplier or Syngene directly

■ Installation

Transilluminator set-up

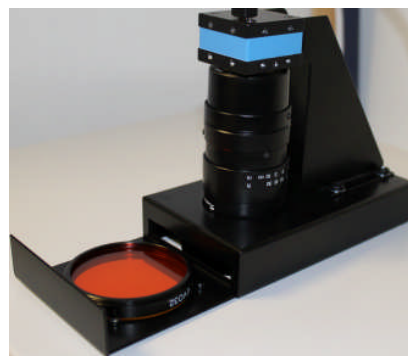
1. Place the transilluminator inside the unit and connect it to the free flying mains lead inside the InGenius unit

Camera set-up

1. To connect the camera to the PC, attach the USB cable to the camera. **Do not** attach the free end of the high speed USB cable to the high speed USB 2 port on the PC until the GeneSys/camera drivers have been installed

Installing the filter

1. Place the UV/EtBr filter with the thread pointing upwards in the filter drawer (found below the camera and on the top of the InGenius system)
2. This filter can be interchanged with other filters for different dyes



■ PC set-up

1. Attach the monitor, keyboard and mouse into the appropriately labelled ports

If you are supplying the PC

2. Switch on the monitor and computer processor
3. Install the GeneSys software following the instructions given on screen (also refer to the hardware install guide). Once complete, plug in the camera USB cable and load the drivers from the CD when prompted

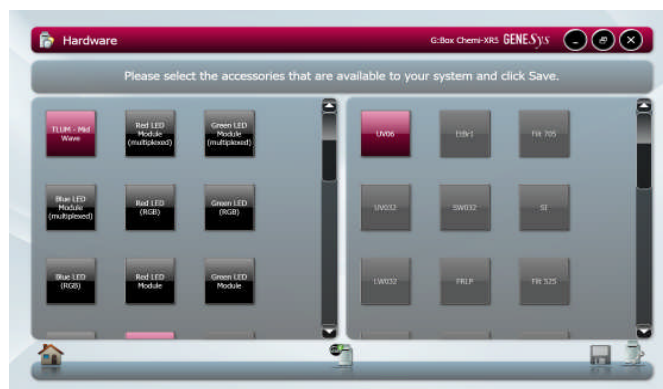
Installing GeneTools software

4. Install the GeneTools software from the supplied CD. If the CD does not auto-run, then using Windows Explorer locate the InstallGeneTools.exe file on CD
5. For hardware or network licensing you will have been supplied with a hardware key. For software licensing each PC will need a media key (found on the CD insert)

When using GeneSys software for the first time or when you have purchased additional accessories (e.g. converter screens) you need to programme the lights, filters and accessories into GeneSys software

■ Load GeneSys software

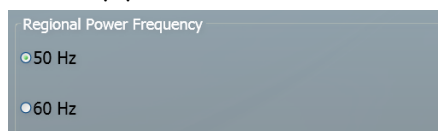
1. From the home page select the 'View available hardware icon'
2. To enter this information simply press if you have a touch screen monitor or click the appropriate buttons to select the hardware that you have with your system. Selected items will turn red



3. Ensure that you click "Save"

■ Select Regional Power Frequency

1. From the home page screen select the 'Preferences icon'
2. To enter this information simply select 50 or 60Hz



CONTACT SYNGENE:
EUROPE:
Tel: +44 (0)1223 727123
Email: support@syngene.com

USA:
Tel: 800 686 4407/301 662 2863
Email: support@syngene.com

www.syngene.com
IG3INST1211