

GeneTools Software Spot Blot Image Analysis- Quick Guide

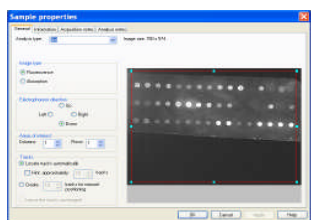
1 Open GeneTools

Select



- ➔ Press open button on standard toolbar
- ➔ Select file you want analyzing

2 Sample properties window



- ➔ Select spot blot form drop down analysis type menu
- ➔ Select spot type choose from circle or rectangle
- ➔ If spots are in a grid select this option

3 Spot manipulation toolbar

Spots the same size

Select



- ➔ **Spots the same size icon** -If spots are all the same size select this icon

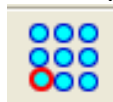
Position-control points

Select



Or

Position any spot



- ➔ **Positioning spots** - use this icon to resize or move the spot frame. Any adjustment in positioning is best made by moving the control point spots (shown in red)
- ➔ Alternatively you can use the position any spot icon

Locate spots

Select



- ➔ **Locating spots** - the locate spots icon allows you to set the conditions for automatic spot detection

Lock position

Select



- ➔ **Lock position** - use this icon to lock the position of spots

Background correction

Select



- ➔ **Background correction** - from the drop down menu select from automatic or manual
- ➔ **Automatic** - will take an individual background measurement calculated from the four corner pixels of each spot
- ➔ **Manual** - the user can draw any number of background boxes upon the image

4 To assign quantities

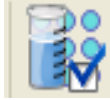
Assign quantities

Select



Quantity calibration parameters

Select



➔ Click on a reference spot then use the assign quantities icon

➔ Then enter a calibrated quantity

➔ For greater accuracy click on quantity calibration parameters icon to add in more than one known quantity

5 Exporting data

Select



Select



or



➔ Report Generation - GeneTools is capable of producing a fully GLP compliant report

➔ Export results table to Microsoft Excel or full report to Microsoft Word

6 Help menu

➔ Select the help menu from the tool bar

➔ Use the drop down menu to pick a help topic

CONTACT SYNGENE:
EUROPE:
Tel: +44 (0)1223 727123
Email: support@syngene.com

USA:
Tel: 800 686 4407/301 662 2863
Email: support@syngene.com

www.syngene.com
GTSBIA0709