

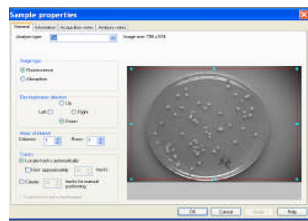
# GeneTools Software Colony Counting Image Analysis-Quick Guide

## 1 Open GeneTools



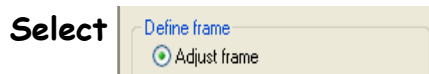
- ➔ Press open button on standard toolbar
- ➔ Select file you want analysing

## 2 Sample properties window



- ➔ Select colony option (pour plate)

## 3 Defining sample area



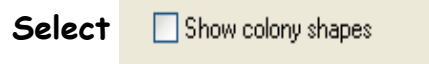
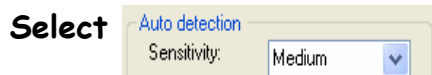
- ➔ Adjust frame by using mouse to position the circular frame over the colony plate
- ➔ Avoid edges where shadowing can be mistaken for colonies

## 4 Excluding regions



- ➔ Select 'Draw exclude region'
- ➔ Use the mouse to draw as accurately as possible around the unwanted region

## 5 Sensitivity detection



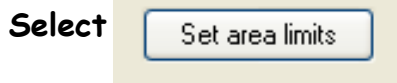
- ➔ Adjust the sensitivity of detection to include all colonies of interest
- ➔ Choose from the drop down menu the level of sensitivity
- ➔ Show shapes to avoid picking up shadows or undissolved agar

## 6 Separate colonies



- ➔ Select this to apply the separation algorithm

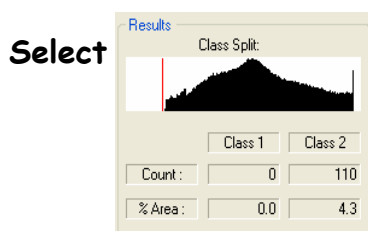
## 7 Set area limits



➔ You can input maximum and minimum colony sizes

➔ Save parameters as sample defaults

## 8 Class split window



➔ This is used when looking at two shades of dark or light colonies

➔ Use the mouse to adjust the red line on the histogram and split the colonies into two class types

## 9 Manual detection



➔ To use the manual detection function select Add/remove colonies option

➔ For single colour colony plate have class 1 selected and for two colour plates select class 2

➔ To delete colonies double click the left-hand mouse button on the colony

➔ To add a colony double click left-hand mouse button elsewhere

## 10 Exporting data



➔ Report Generation - GeneTools is capable of producing a fully GLP compliant report



➔ Export full report to Microsoft Word

CONTACT SYNGENE:  
EUROPE:  
Tel: +44 (0)1223 727123  
Email: support@syngene.com

USA:  
Tel: 800 686 4407/301 662 2863  
Email: support@syngene.com

[www.syngene.com](http://www.syngene.com)  
GTCCIA0709