

GeneScan Image Capture - Quick Guide

1 Start GeneTools software

Select



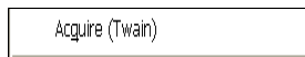
➔ Press open button on standard toolbar

2 Select appropriate GeneTool settings

Select



Select

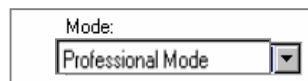


➔ Click 'Select Source (Twain)' from File menu

➔ Then select 'Acquire (Twain)' to launch Epson Scan software

3 Epson Scan software

Select



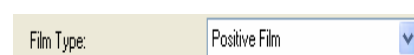
➔ Select the Professional Mode from the drop down menu

4 Select appropriate settings

Select



Select



➔ For film, Coomassie or silver stained gels

➔ Select Film (with) Film Area Guide for the document type

➔ For Film Type select Positive film

➔ Check that 16 bit greyscale and 300 dpi are selected

5 Save settings icon

Click



Select



➔ Files can be saved to My Documents, My Pictures or Other

➔ From the drop down menu select TIFF as the recommended image format type

6 Configuration settings

➔ To change configuration settings click on the tabs to change Preview, Colour, Film size and Other

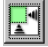
➔ Click OK to save the changes

7 Position sample

- ➔ Place Film Area Guide template on to scanner bed
- ➔ Place gel on to scanner bed
- ➔ **N.B.** Do not use the document mat

8 Preview



- ➔ After the image has been preview scanned click on the 'Automatically locates the image' icon 
- ➔ A dotted box will now be drawn around the gel
- ➔ Click the zoom button to rescan the selected area

9 Scan



- ➔ Click the Scan button

10 Sample properties window

- ➔ The scanned image will now open in the 'Samples Properties' window for analysis with GeneTools software.

CONTACT SYNGENE:
EUROPE:
Tel: +44 (0)1223 727123
Email: support@syngene.com

USA:
Tel: 800 686 4407/301 662 2863
Email: support@syngene.com

www.syngene.com

GSIC0809