

GeneGnome⁵ intelli-Chemi Image Capture - Quick Guide

1 Turn on

➔ Press the black button at the rear of the instrument

2 Start GeneSnap software

➔ Each user can enter a name or title for their own individual user preferences

3 Open drawer

Select



Open

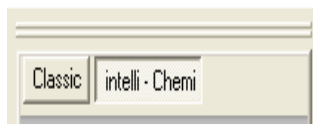


Closed

➔ Place your sample in between the scored 8 position arrows present on the edges of the drawer frame. Then gently push the drawer to close

4 Choose appropriate settings

Select



➔ Select the intelli-Chemi tab

Select



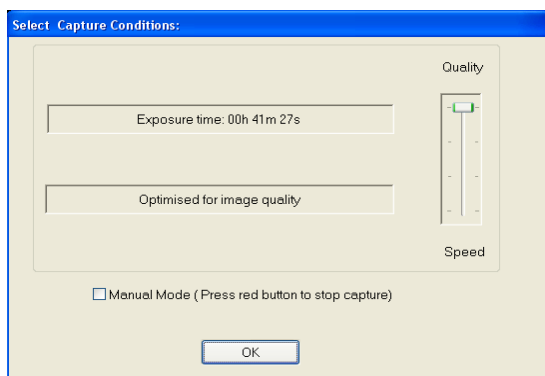
➔ The image markers box is not default checked. If you do want to image markers please check this box

Press



➔ When the door is shut the button will turn blue and the image is no longer live

➔ Press the blue button to start



➔ 4 acquisition times are offered ranging from longer times optimised for quality to short times optimised for speed

➔ Click between options to select capture time desired

➔ Countdown times are displayed

5 Stop capture

Click



- ➔ Press the red button at anytime to stop the image capture process

6 Save

Click



- ➔ Choose from Save As
- Or
- ➔ File/Export image to TIF, BMP, or JPEG

7 Print

Click



- ➔ Sends image to printer

8 Help menu

- ➔ Select the help menu from the toolbar
- ➔ Use the drop down menu to pick a help topic

CONTACT SYNGENE:
EUROPE:
Tel: +44 (0)1223 727123
Email: support@syngene.com

USA:
Tel: 800 686 4407/301 662 2863
Email: support@syngene.com

www.syngene.com
GG5iChemICO211