

# G:BOX Installation - Quick Guide

## ■ System components

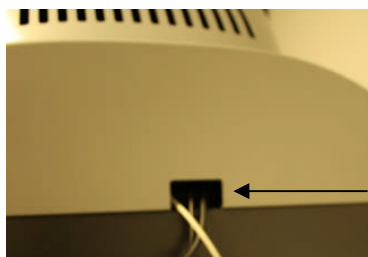
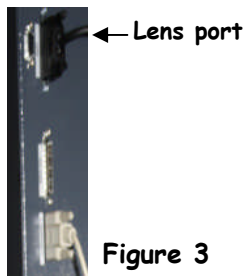
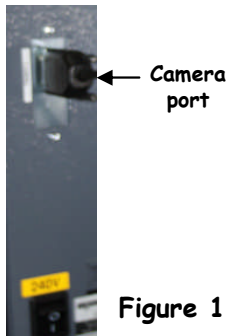
1. Darkroom with epi white lighting (factory fitted)
2. Camera with lens, close-up lens and UV filter (factory fitted)
3. UV transilluminator
4. GeneSys and GeneTools software
5. USB to serial/COM port converter
6. All required cables

**CAUTION:** Do not connect power supply to any of the components until you are instructed to below. For assistance please contact your supplier or Syngene directly

## ■ Darkroom set-up

1. Connect power cable to the back of the darkroom

### Camera

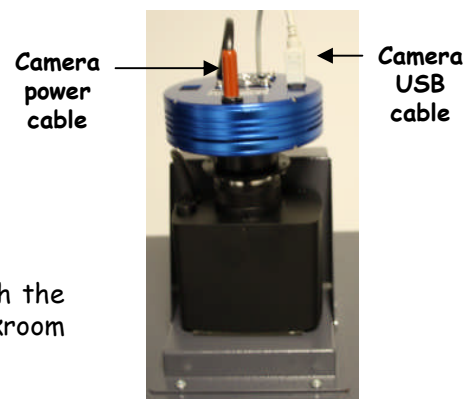


1. Connect the camera power cable (9-way D-type connector) to the back of the darkroom (port labelled 'camera') (Figure 1)

2. Place the camera (first remove lens cap if fitted, pull off the lens cap, DO NOT screw off or you will remove filters) on top of the darkroom with the bracket facing the rear and connect the camera power cable (the DC power end) to the camera (Figure 2)

3. Using thumb screw washers attach the camera to the top of the darkroom (Figure 2)

4. Connect lens cable to the back of the darkroom (port labelled 'Lens') (Figure 3)



5. Attach the USB cable to the camera

6. DO NOT attach the free end of the USB cable to the USB 2 port on the PC until GeneSys software has been installed

7. Place the hood on top of the darkroom to cover the camera and lens assembly (Figure 4)

## Darkroom lighting

1. Turn on darkroom (switch at rear of G:BOX)
2. With the darkroom door open slide the transilluminator between the runners located on each side
3. Connect the flying mains lead in the darkroom into the input socket on the rear of the transilluminator. Make sure the power button on the front of the transilluminator is turned on and the power switch is set to 100 percent

## Fitting the white light panel option

1. If White Light Panel option has been purchased, the white light stage is factory fitted on hinges at the rear of the G:BOX unit
2. Fold the white light stage down, so that it rests on top of the transilluminator
3. The stage is fitted with adhesive strips, on to which the panel is mounted. Peel off the film from the adhesive strips and attach the panel to them, the rubber feet on the panel locate into holes in the stage
4. Insert the panel power lead into the power inlet on the panel

## ■ PC set-up

1. Set up the PC by attaching the monitor, keyboard and mouse into the appropriately labelled ports
2. Connect electrical power leads to each component. Turn on the PC (if you purchased the PC directly from Syngene then all the following software steps below will have been done for you. You will however have to accept the Microsoft Windows™ operating system licence and plug in the camera and serial cable)

## Installing GeneSys software

3. Insert the GeneSys CD and run the set-up program. Then follow the instructions on screen.
4. Once installed plug in the camera to a high speed USB 2 port on the PC. The camera drivers should be automatically loaded. If a warning appears about the drivers being unsigned or unverified then choose to proceed with the installation
5. Connect the serial cable from the labelled port in the rear of the darkroom ('Darkroom/PC') directly to the serial port on the PC **then proceed to step 5**. If there is no serial port on the PC then use the supplied USB adapter


**N.B.** GeneSys requires an OpenGL compatible graphics card with a resolution of at least 1280x900 with true colour, with DPI set to normal size (96DPI)

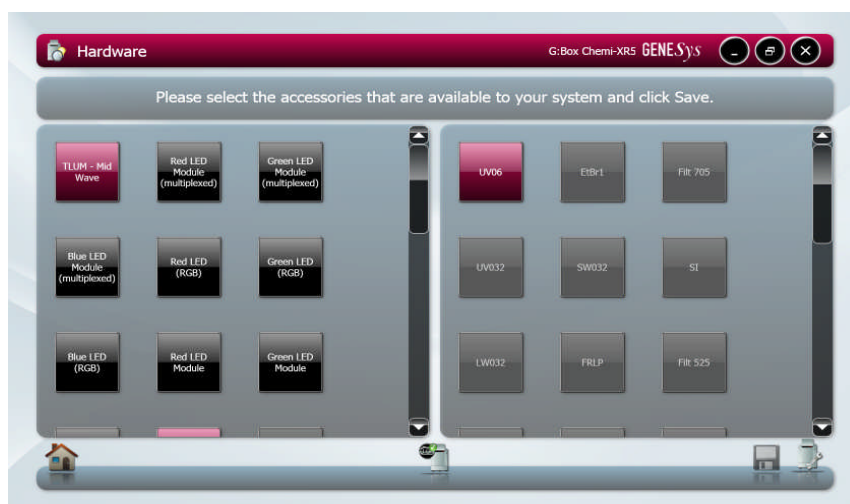
## Installing GeneTools software

6. If the CD does not auto-run then using Windows Explorer locate the InstallGeneTools.exe file on the CD
7. Follow on-screen instructions to install and license GeneTools software. For hardware or network licensing you will have been supplied with a hardware key. For software licensing, each PC will need a media key (found on the CD insert)

When using GeneSys software for the first time or when you have purchased additional accessories (e.g. converter screens) you need to programme the lighting, filters and accessories into GeneSys software

### ■ Load GeneSys software

1. From the home page select the 'View available hardware icon'
- 
2. To enter this information simply press if you have a touch screen monitor or click the appropriate buttons to select the hardware that you have with your system. Selected items will turn red



3. Ensure that you click "Save"

CONTACT SYNGENE:  
EUROPE:  
Tel: +44 (0)1223 727123  
Email: support@syngene.com

USA:  
Tel: 800 686 4407/301 662 2863  
Email: support@syngene.com

[www.syngene.com](http://www.syngene.com)  
GBI1211