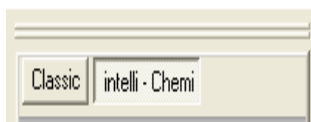


G:BOX iChemi Chemiluminescence Image Capture-Quick Guide

1 Start GeneSnap software

Select



- ➔ Select the chemi sample configuration and close darkroom door
- ➔ If using an XT or XL system allow the stage to position correctly
- ➔ Select the intelli-Chemi tab

2 Position sample

Select









- ➔ Place blot in the centre of the visible area. Leave darkroom door open
- ➔ Click the green iChemi button to generate a live view

3 Focus, brightness and resolution settings



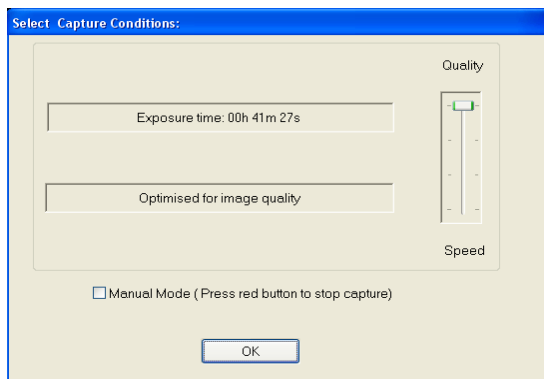
Select



- ➔ To adjust the focus () of the camera use the  to increase and the  to decrease the focus
- ➔ If there is nothing on the blot to focus on then use a piece of paper with writing on it to focus
- ➔ To change the brightness of the image use the "preview brightness bar"
- ➔ To adjust the zoom on the iChemi or iChemi XR () use the  to increase and the  to decrease the zoom . Zoom in so that the sample fills the screen for maximum resolution
- ➔ To move the sample stage in the iChemi XL or iChemi XT press the white button on the inside of the darkroom door and then use the icons shown above to move the stage up or down. The sample should fill the screen for maximum resolution
- ➔ Press the red button to end live view

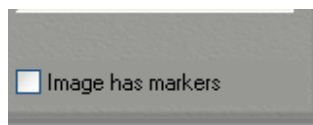
4 Setting acquisition time

Press



- ➔ When the door is shut the button will turn blue and the image is no longer live
- ➔ Press the blue button to start
- ➔ 4 acquisition times are offered ranging from longer times optimised for quality to short times optimised for speed
- ➔ Click between options to select capture time desired
- ➔ Countdown times are displayed

5 Imaging markers



- ➔ The image markers box will be automatically checked. If you do not want to image markers please uncheck this box
- ➔ At the end of this capture you will have an image of the blot, an image of the markers and a final composite image of the two together

6 Help menu

- ➔ Select the Help menu from the toolbar
- ➔ Use the drop down menu to pick a help topic

CONTACT SYNGENE:
EUROPE:
Tel: +44 (0)1223 727123
Email: support@syngene.com

www.syngene.com
GBICHIC0510

USA:
Tel: 800 686 4407/301 662 2863
Email: support@syngene.com