

# G:BOX F<sup>3</sup> Fluorescence Automated Image Capture - Quick Guide

## 1 Start GeneSys software

➔ Each user can enter a name or title for their own individual user preferences

## 2 Home screen

Select



➔ Select Auto Capture from the home screen

## 3 Sample selection

Select



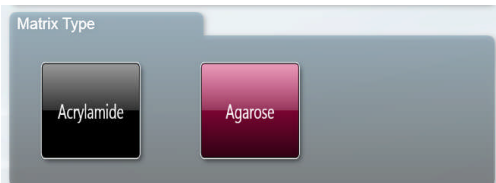
➔ Choose your sample format from Gel, Blot and Other

Select



➔ Select whether your sample is Protein, DNA or RNA

Select

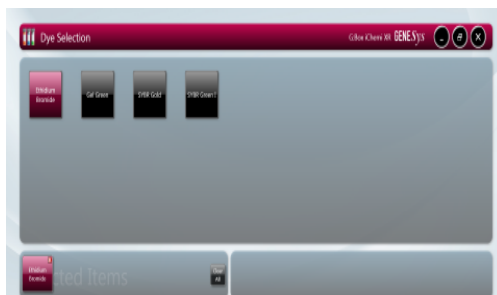


➔ For DNA/RNA gels select the matrix type for your sample. Choose between Acrylamide and Agarose

Click large green bouncing arrow to move to next screen

## 4 Dye selection

Select



➔ Select the dye that you are using from the list on screen

➔ For multiplexing simply select multiple dyes off the list (select up to 5)

Select



Check



➔ Use the search box to quickly find dyes within the list or if it is a dye that you have used before check the 'Recent selections only' to display the recently used dyes

Click large green bouncing arrow to move to next screen

## 5 Protocol selection

Select

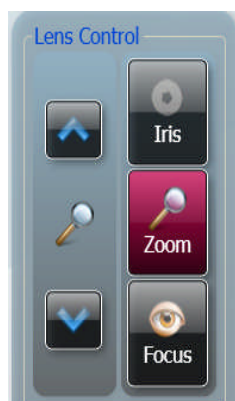


Check


➔ GeneSys software calculates the best imaging protocol for your chosen application and hardware configuration




➔ If you wish to see more options tick the box 'More Options' or if you prefer not to use UV lighting then tick the box 'Non UV protocols only'  
Click large green bouncing arrow to move to next screen


## 6 Sample positioning



➔ Use the Lens Control arrows to adjust the focus, iris and zoom

➔ Focus  -press the up or down arrows to adjust the focus

➔ Iris  - to alter camera aperture press the  to let more light reach the camera sensor and press the  - to close the aperture

➔ Zoom  - allows you to enlarge the image. Zoom in so that the sample fills the image window for maximum resolution

Click large green bouncing arrow to move to next screen

## 7 Print and save

Click



➔ Click on the printer icon to send image to printer

Click



➔ Click Save and choose to save image as a TIF, BMP or JPEG

CONTACT SYNGENE:  
EUROPE:  
Tel: +44 (0)1223 727123  
Email: [support@syngene.com](mailto:support@syngene.com)

USA:  
Tel: 800 686 4407/301 662 2863  
Email: [support@syngene.com](mailto:support@syngene.com)

[www.syngene.com](http://www.syngene.com)  
GBF3FAIC1211