

DigiGenius Installation - Quick Guide

■ System components

1. Camera
2. Lens
3. Hood
4. Bracket
5. UV filter
6. +4 dioptre filter
7. Screws and washers

■ Installation

To attach camera lens

1. To remove the lens cover press the black button next to the lens slot and rotate anti-clockwise. The lens cover also comes off by screwing the top anti-clockwise. The camera and the lens have corresponding white spots. Line these up and screw the lens on clockwise. Remove front lens cap

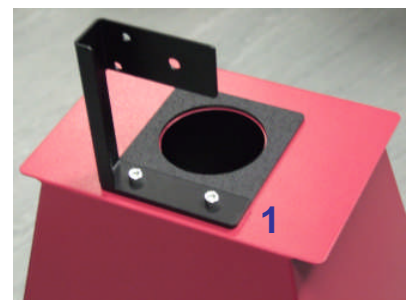
Camera set-up

1. To charge battery please refer to camera manual
2. Screw on the dioptre filter to the front of the lens
3. Screw the UV filter to the lens and dioptre filter
4. Install the camera software next. To do this refer to the instructions in the camera manual
5. It is recommended to have the camera set to take black and white images (this should have been already set), the camera should be in 'P' mode. To set B/W imaging turn on the camera making sure the settings indicator is on 'P'. On the rear of the camera press the "Q" button and then the left arrow move down to Picture Style. Press set then select monochrome. Then press Set to store
6. To use the camera in colour mode return the main selector to Auto
7. To use the camera in colour mode move the mode dial to the green square auto-mode



Hood assembly and camera set-up

1. Place the black plinth on top of the hood then attach the camera bracket to the top of the hood through the plinth with the 2 screws and washers provided (1)

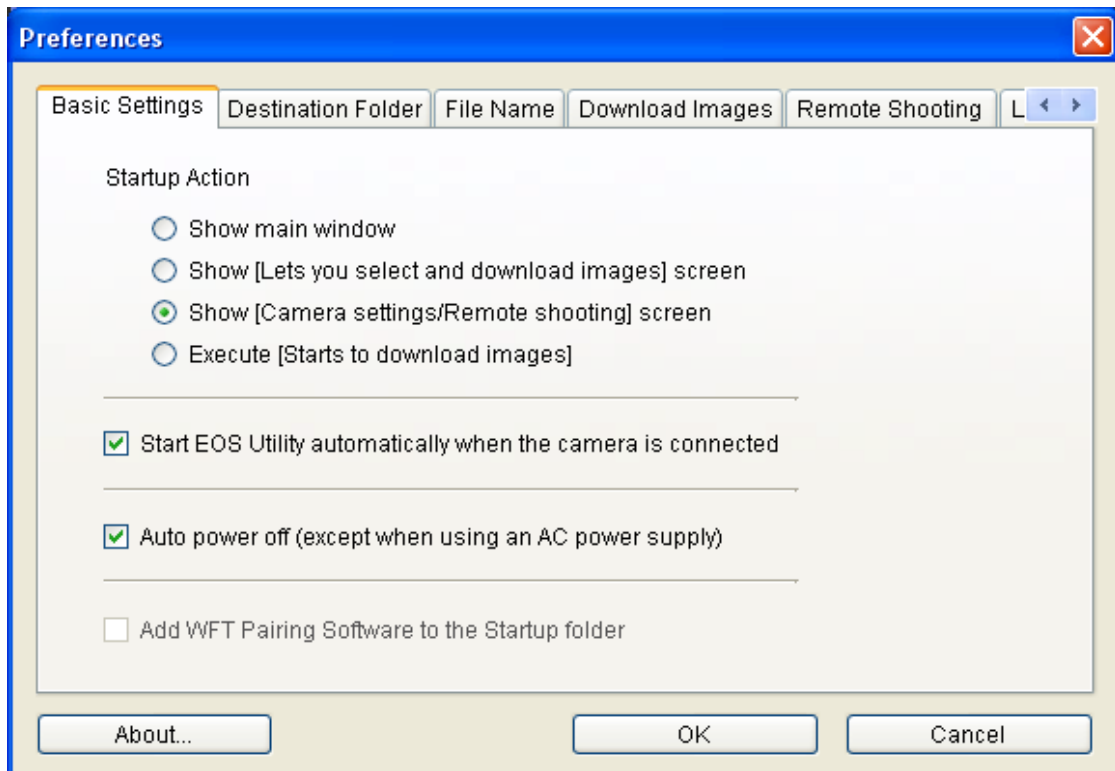


2. To attach the camera to the bracket insert the screw through the bracket with a washer between the screw and the bracket (2)
3. Align the camera with the hole of the hood (making sure there are no gaps between the black plinth and the camera lens)
4. The system is now ready for use, place the camera/hood assembly on the transilluminator over the gel you want to image



Installing software

1. Install the software on Canon EOS Digital Solution Disk
2. To start the software click on Start/All Programmes/Canon utilities/EOS Utility/EOS Utility
3. Select preferences and select as below
4. Under the remote shooting tab select Rotate. Once all the settings have been set press OK



When you turn on the camera the software will start automatically

CONTACT SYNGENE:

EUROPE:

Tel: +44 (0)1223 727123

Email: support@syngene.com

USA:

Tel: 800 686 4407/301 662 2863

Email: support@syngene.com

www.syngene.com

DGIG0511