

How to use data from GeneTools

Introduction

Many researchers today want to use the data obtained from analysing their images with Syngene image capture systems in presentations, grants, papers and posters. This often requires exporting data to a spreadsheet program for additional processing.

GeneTools software is unique in that not only does it allow you to transfer data with the click of a button directly into Excel™, but you can also use the comprehensive reporting facilities to print a full report or save it to Word™ for further editing.

Exporting Analysis Data into Excel™



To export data from GeneTools following your analysis simply click on the icon on the tool header bar.



This will automatically open Excel™ on your computer and drop all the data from the GeneTools data table into Excel™ vertically, track by track. If you only require the data from a single track then select 'Results for selected track' from the results table prior to clicking on the icon.

Results for selected track				Results for all tracks	Matching comparisons	Matching matrix	Matching coefficients
Track 1							
Number	Mol. weight	Height	Raw vol.				
1	0.00	36.780	9269.58				
2	0.00	27.218	5576.17				
3	0.00	28.266	6644.31				
4	0.00	32.526	8943.12				
5	0.00	42.168	11793.87				
6	0.00	53.232	17888.97				

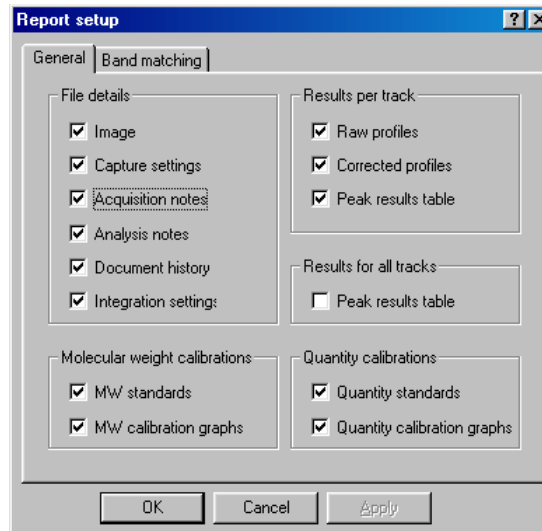
This method does not require you to cut and paste all the information into clipboard first like many other software programmes.

Produce a custom made analysis report

This is a fully comprehensive package provided within GeneTools software at no additional expense. It provides an invaluable tool to all scientists to easily manipulate data, graphs and images.



In order to create a report, following your gel analysis, choose the "Report Set Up" icon from the header tool bar: This will display a check box showing all the options that can be included in the report – for example track profiles, calibration curves etc.



By ticking the appropriate boxes the customer can design their own report detailing their exact requirements with no set parameters. Once ticked, click OK to save your settings. Further along the header bar is a print preview icon.



This allows you to view and then print the report (the default printer has to be changed from the thermal printer to an A4 printer prior to printing).



Alternatively, choose the "Export to Word" icon and the whole report will be saved as a Word Document for further editing.

Syngene reserves the right to amend or change specifications without prior notice. This Application Note supersedes all earlier versions.

All trademarks acknowledged.

May 2010

UK tel: +44 (0)1223 727123
Email: sales@syngene.com

USA tel: 800 686 4407/301 662 2863
Email: ussales@syngene.com