



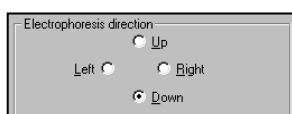
# Handy Helper

Application Note 22

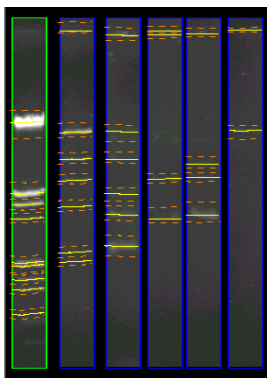
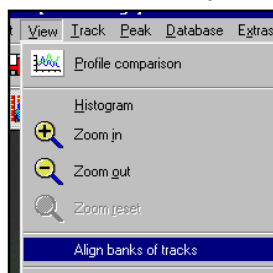
## Re-aligning Gel tracks in GeneTools

When analysing a gel in GeneTools, the process has always been much easier when the gel tracks run vertically from top to bottom. This is because the software windows are much easier to work with and view when the data is displayed in this format.

Now it is easy to analyse any gel, even if the tracks are running horizontally from left to right or vice versa. Simply bring the gel into GeneTools, being careful to select the direction of electrophoresis in the sample properties window.



Once GeneTools has automatically located the tracks, simply click on the View menu and select the 'Align banks of tracks' option.



The tracks will be aligned vertically on the left-hand side of the window, making it much easier to proceed with analysis and view the track data.