

# GeneGnome HR iChemi Image Capture-Quick Guide

## 1 Turn on

➔ Press the black button at the rear of the instrument

## 2 Start GeneSnap software

➔ Each user can enter a name or title for their own individual user preferences

## 3 Open drawer

Select



Open

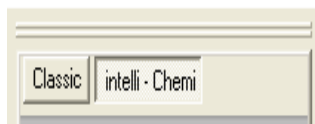


Closed

➔ Place your sample in between the scored 8 position arrows present on the edges of the drawer frame. Then gently push the drawer to close

## 4 Choose appropriate settings

Select



➔ Select the intelli-Chemi tab

Select



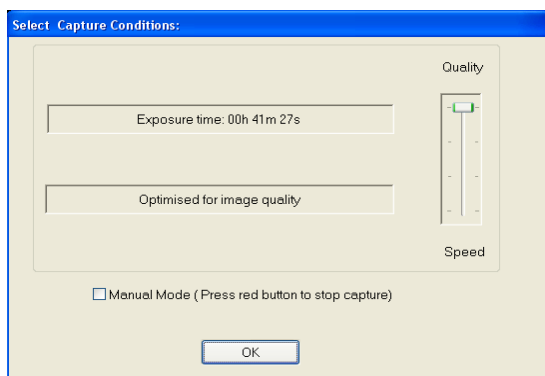
➔ The image markers box is not default checked. If you do want to image markers please check this box

Press



➔ When the door is shut the button will turn blue and the image is no longer live

➔ Press the blue button to start



➔ 4 acquisition times are offered ranging from longer times optimised for quality to short times optimised for speed

➔ Click between options to select capture time desired

➔ Countdown times are displayed

## 5 Stop capture

Click



- ➔ Press the red button at anytime to stop the image capture process

## 6 Save

Click



- ➔ Choose from Save As
- Or
- ➔ File/Export image to TIF, BMP, or JPEG

## 7 Print

Click



- ➔ Sends image to printer

## 8 Help menu

- ➔ Select the help menu from the toolbar
- ➔ Use the drop down menu to pick a help topic

CONTACT SYNGENE:  
EUROPE:  
Tel: +44 (0)1223 727123  
Email: support@syngene.com

USA:  
Tel: 800 686 4407/301 662 2863  
Email: support@syngene.com

[www.syngene.com](http://www.syngene.com)  
GGHRiChemIIC0210